

Tanat Valley Coaches

HOLIDAYS, SHORT BREAKS
& DAY TRIPS 2018



Croeso and a big welcome to all our customers old and new!

We at Tanat Valley Coaches are forecasting fine travelling, superb sights and engaging escapes for all those who hop aboard, so dive into our 2018 day trips and holidays brochure, where you will find much to inspire you. Allow Tanat Valley Coaches to transport you through the seasons not only upon our fair isle but beyond to the mysterious North...

2017 was such a great year and 2018 promises to be even more exciting... however, we are also looking to 2019. Yes, 2019 will see another Tanat Valley first! We will make it possible for you to witness the wondrous Aurora Borealis because we are going on a Northern Lights Cruise! (details on page 10 & 11). We have no doubt this will prove to be very popular so bookings are being taken now!

Right, back to 2018 and with so much to see and do the following is a taster of what we have on offer...

June we travel to York for 2 nights for you to explore this wonderful 'Walled City' and include a visit to the magnificent Castle Howard, recently featured in ITV's 'Victoria'! In August we are off to the breathtakingly, beautiful Isle of Wight for 4 nights, an absolute must and September sees us in Ireland for our annual International Sheepdog Trials, with plenty of excursions for those who would rather explore this wonderful Emerald Isle!

In terms of popularity with our day trips, it is difficult to top our yearly Harry Potter outing, however this year we do just that with our Christmas Special... 'Hogwarts in the Snow'! So book early to avoid the curses of disappointed young wizards and witches! Also, for our young folk we have Shrek the Musical in August and Disney on Ice in October plus one or two other great family trips, so be sure to book them a seat!

For a more sedate experience there are the popular traditional tours such as, Llandudno Monthly, Abergavenny & Brecon, the Bluebell Train, Autumn Tints and Anglesey Bays Tour and many more! Places of interest include The National Arboretum, The Terracotta Warriors and a Rivers Explorer & Beatles tour not to mention all the shoppers and fayres throughout the year...!

So if any of our super holidays or trips on offer appeal to you and you would like to book your seat(s), then please do not hesitate to contact our helpful and considerate staff in the booking office on 01691 780908

Hop aboard with Tanat Valley Coaches and make 2018 a year of discovery!

Contents

| | |
|----------------------------|----------------|
| Introduction | Page 02 |
| Holiday Tours | Page 04 |
| 2019 Cruise | Page 10 |
| Day Trips | Page 12 |
| Express Services | Page 23 |
| Private Hire | Page 24 |
| Booking Information | Page 26 |
| Other Services | Page 30 |
| Contact Details | Page 32 |



"Just a note to say special thanks to you all. We appreciated the help you gave in organising our Sunday School Trip for Dovaston URC on 12th August 2017.

Please pass on our thanks to Steve our driver for the day who helped to make the day a great success!"

L Jones (Kinnerley)



Wonderful Walled City of York including Castle Howard

Thursday 7 June – Saturday 9 June (3 days)



Very few cities in England are able to boast such an exciting mix of cultures, whether you choose to stroll through the Snickleways of York, take in a gallery or museum, visit the bustling shopping streets or just relax in one of the many wine bars and restaurants. The overhanging timber-framed houses and traditional shopfronts of The Shambles is also a must see, making it one of the UK's most historic and picturesque streets in the UK — York has something for everyone.

Castle Howard is a magnificent historic house in the north of England, the 18th century residence is set within 1,000 acres of breath-taking landscape just outside York. This stately home boasts world-renowned works of art and stunning architecture having been designed by Sir John Vanbrugh and built with the assistance of Nicholas Hawksmoor. The grounds include lakes, fountains, temples and woodland as well as formal walled garden and a range of cafés and shops including farm shop and garden centre.

Oswaldtwistle Mills award-winning Shopping Village in Lancashire has something to amaze, charm and intrigue visitors of all ages; 100 retailers, 5 Restaurants, Ice Cream Parlour, extensive Home, Lifestyle & Garden Centre, Mill Grounds, Aquatics Specialist, Textile & Heritage Museum and even its own Wildfowl Reserve.

Itinerary

Day 1 Today we travel up to York, to the Queens Hotel - which is situated on the banks of the river Ouse and is a 5 minute walk to the city centre. We will arrive in plenty of time to check in before you go off to explore this wonderful City! Free time in York then return back to the hotel at your leisure (evening meal served at 18:30).

Day 2 Today we visit Castle Howard where generations of the Howard family have welcomed visitors for over 300 years. Recently featuring in ITV's **'Victoria'**, the Castle also famously starred in the film and television adaptations of **'Brideshead Revisited'**. Marvel at the unique architectural design of this beautiful 18th century house, with its Palladian wings and dramatic dome, where inside you will find world renowned works of art sitting amid lavish interiors.

The estate boasts rolling lawns, lakes, fountains, temples, woodland and ornamental walled garden, along with a range of shops and cafes such as the stable courtyard with free admission that includes a farm shop, cafe and coffee shop, gift shop and garden centre.

We return to the Hotel with time for you to take a stroll along the river and freshen up before dinner.

Day 3 After breakfast we leave the Queens Hotel. On the return journey we will be stopping at Oswaldtwistle Mills; here you will have time to browse the shops and have a bite to eat before we head for home.

Hotel

The 2* Queens Hotel is centrally located on the south bank of the River Ouse, just a short walk from the city centre. All bedrooms equipped with tv, hairdryer and tea/coffee making facilities. The traditional restaurant has views over the river as does the adjacent bar.

Cost Includes

- All Coach Travel
- Entrance to Castle Howard
- 2 night's 3 course dinner, bed and breakfast

Price

£225.00 per person sharing
£275.00 single

£40 per person deposit
required on booking



Idyllic Isle of Wight

Monday 6 August – Friday 10 August (5 days)



If you have never visited before then make 2018 the year that you discover England's island destination. Join us for a visit to the Isle of Wight and find there is more to this beautiful island than you may have thought; it is the perfect place to explore, have fun and enjoy some well-earned rest.

The Isle of Wight described as a 'Little England' thanks to its picturesque villages, charming towns and bustling seaside resorts - shaped like a diamond and with 57 miles of coastline, you are never more than a few miles from the sea wherever you are on the Island!

Our packed itinerary includes many of the islands world renowned landmarks and visitor attractions and travel on two different stretches of the Isle of Wight steam railway. We also visit Osborne House; Queen Victoria's palatial holiday home. Visit Victoria and Albert's private apartments, their bathing beach and children's play-cottage for an intimate glimpse of royal family life. Then stroll through the garden terraces where the stunning views across the Solent reminded Prince Albert of the Bay of Naples.

Itinerary

- Day 1** An early start today as we make our way to Portsmouth for the short ferry crossing to Fishbourne on the Isle of Wight. Once off the ferry it's a short drive to your hotel, where on arrival you can enjoy a welcome drink whilst soaking in the beautiful views from the hotel before dinner.
- Day 2** Board our coach for a circular tour of the island, taking in the famous Isle of Wight Pearl shop; The Needles; Yarmouth; Cowes and Ryde, arguably the best place on the Isle of Wight to indulge in a bit of retail therapy!
- Day 3** This morning we enjoy a journey on the Isle of Wight Steam Railway. Settling back on the relaxing 5 mile journey you will have a unique view of some of the Islands unspoilt countryside. Taking us on two stretches of the line, we will start at Havenstreet Station to Smallbrook junction and return, then it's off to Wootton before returning to Havenstreet where we started! In the afternoon we spend time at leisure in Shanklin.
- Day 4** Today we visit Osborne House, Queen Victoria's family home and one of the most popular tourist attractions on the Isle of Wight. With its Victorian opulence and extravagant interiors; private apartments including the Queen's bedroom; the Swiss Cottage; extensive grounds and Victorian Walled Garden, it is no wonder after first visiting Osborne, England's longest-reigning monarch wrote: "It is impossible to imagine a prettier spot".
- Day 5** After breakfast this morning we will make our way home.

Hotel

The 3* Bourne Hall Country House Hotel is set in 3 acres of mature gardens and is a short walk from the beach. This Victorian country house offers stunning views over Sandown & Shanklin Bay and has two swimming pools and a spa bath. Each room comes fully equipped with TV, hair dryer and tea/coffee making facilities.

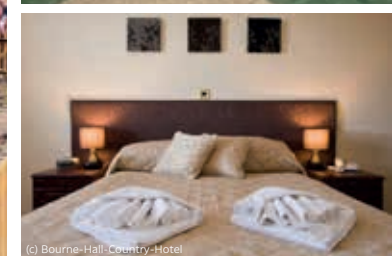
Cost Includes

- All Coach Travel
- Ferry crossing
- 4 night's dinner, bed and breakfast
- Excursions; including tickets for the train & Osborne House

Price

£480.00 per person sharing
£480.00 single (limited availability)

£40 per person deposit
required on booking



International Sheepdog Trials County Down, Northern Ireland

Wednesday 5 – Sunday 9 September (5 Days)



County Down is one of the most fabulous counties in Ireland. From the beautiful Mourne Mountains to Strangford Lough, this place has it all.

The eyes of the sheepdog world will be on County Down for this year's International Sheepdog Trials, hosted by the Gill Hall Estate in Dromore. Held over three days in September the event brings together the top 15 sheepdog and handler combinations from England, Ireland, Scotland and Wales and visitors from all over the world! For sheepdogs and their handlers this is an event of major significance.

We will transfer you to and from the trials or you may wish to join the daily excursions, exploring this beautiful area of Northern Ireland. Some people come along and do a bit of both!

Itinerary

- Day 1** Travel to Holyhead for the swift ferry crossing to Dublin Port – on disembarking we travel north to Armagh, arriving at 'The Armagh City Hotel' with plenty of time to freshen up before dinner.
- Day 2** Trialers can enjoy an early breakfast before their transfer to the Trials. For those who wish to join our excursion there is a leisurely breakfast before we travel to Belfast - one of Europe's most exciting cities with a phenomenal Titanic history, along with a fantastic line up of things to see and do. Enroute we will be visiting the small, pretty seaside resort of Newcastle; which lies on the Irish Sea at the foot of Slieve Donard, the highest peak of the Mourne Mountains, and is known for its sandy beach and new promenade.
- Day 3** Another early start for the trialers. The rest of the group will board the coach after breakfast and depart for a breathtaking tour of part of the North-East Coast, taking in some of Ireland's most incredible sights - the Causeway Coastal Route is a true legend! Stopping at the Old Bushmills Brewery settled on the banks of the river in the small village of Bushmills, you'll find the oldest working distillery in Ireland. Here you can purchase your lunch, browse the gift shop and take a tour of the Distillery before we head back to Dromore to pick up trialers for the journey back to the hotel.
- Day 4** Last early start for Finals Day and for those not attending you will have the opportunity to explore the beautiful City of Armagh. Why not take the opportunity to visit St Patrick's Roman Catholic Cathedral. Well worth a tour, its design, stained glass windows, mosaics and shimmering gold leaf sculptures are a serene and breath-taking experience of St Patrick yesterday and today.
- Day 5** Homeward journey.

Cost Includes

- All Coach Travel
- Swift Ferry Crossing
- 4 night's dinner, bed and breakfast
- Excursions as itemised (including Old Bushmills Distillery Tour) and/or
- Transfer to and from Trials

Not Included

- Tickets for Sheepdog Trials. Information on how to obtain your tickets will be provided when booking.

Price

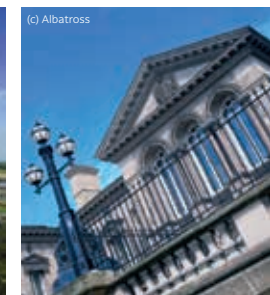
£422.00 per person sharing
£541.00 single

£40.00 per person deposit
required on booking

Hotel

Located in the heart of Ireland's oldest city, in Northern Ireland's "Orchard County", the Armagh City Hotel is renowned for its warm Irish hospitality. The hotel offers comfortable accommodation, delicious food and a state-of-the-art health club. The health club includes all of the following facilities:

- Fully Equipped Gym
- Swimming Pool & Jacuzzi
- Sunbeds & Sauna



Fred. Olsen – Northern Lights Cruise

Northern Lights in 8 Nights

Tuesday 26 February - Wednesday 6 March



We get the odd glimpse of the Northern Lights here at home, but Norway is where they truly sparkle. And there's no better way to experience their iridescent beauty than from the deck of a ship.

Go in search of the magical Aurora Borealis on a Fred.Olsen Northern Lights cruise. Norway is home to some of the most beautiful and life-affirming scenery in the world, with natural splendour ranging from the fjords and forests through to glaciers and glass-like waters. The Aurora Borealis (Northern Lights) is one of nature's most awe-inspiring phenomena and have become something of a must-experience event for so many. A vibrant, dancing display of green, blue and pink 'light' illuminates the skies above Norway, a simply unforgettable sight creating memories which will last forever.

With Fred.Olsen you can set sail in search of the lights, timed to offer you the best chance to experience one of Mother Nature's most magical natural wonders. The cruise will present you with chances to discover a host of other stunning sights and experiences too, from opportunities to take in the Arctic wilderness on a husky sledding adventure; visit an Ice Hotel; meet indigenous Sami people; and much more. See Norway's spectacular landscapes at their most dramatic.

Itinerary

- Day 1** Board the cruise ship and depart from Newcastle
- Day 2-3** Cruising
- Day 4** Bodo, Norway
- Day 5** Tromso
- Day 6** Narvik, Norway
- Day 7** Cruising
- Day 8** Cruising
- Day 9** Return to Newcastle

Ship

Step on board Fred.Olsen Cruise Lines' friendly ships and start your holiday with a smile. As the ships are smaller and more personal, you'll feel relaxed and at home straight away. Each of the beautiful cruise ships has its own distinct character; from great bars and restaurants through to entertainment and relaxation, you can rest assured that you are in for an unforgettable journey.

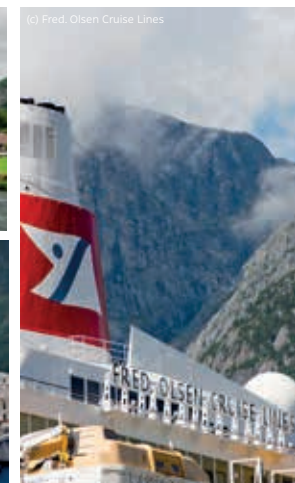
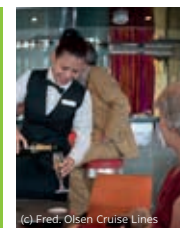


Cost Includes

- All Coach Travel
- 8 night cruise
- All inclusive drinks package
- Choice of rooms – enquire for prices
- Buffet breakfast, lunch, afternoon tea, dinner, late night buffet

Price from £1137

(can be paid in instalments)
A 15% deposit per person is payable at the time of booking



Tanat Valley Coaches are an appointed agent of Greatdays Holidays. Full Terms and Conditions will apply.

Booking Information

How To Book

Simply contact us at our office in Llanrhaeadr YM or go into one of our agents - contact details are on the back cover.

Payment

All day trips must be paid for on booking, in full and will be deemed to be provisional until full payment is received. A deposit must be received for holiday bookings before it becomes a firm booking.

Pick-Up Location and Information

Our day trips pick up in Newtown, Welshpool and Oswestry and points in between.

We also pick up in the Tanat and Cain Valleys and surrounding area on towards Morda. Depending on the route of a specific trip we may pick up in Chirk, Gobowen, St Martins, Ellesmere, Wrexham or Shrewsbury - please enquire.

Times and routes will vary depending from where people book. Please ask about your preferred pick-up point and we will do our best to accommodate you. We will use a feeder coach, mini-bus or taxi wherever appropriate to cut down on the length of your journey.

Day Trip Booking

Bookings can be made by telephone. Once full payment has been received your booking will be considered firm and a seat allocated. If a customer requests a seat in the first three rows of the coach (seats 1-12) then payment is required at the time of booking. If a booking is made for a day trip more than 8 weeks prior to departure, a deposit of £10 must be made, per booking, per trip. The balance is then due 6 weeks prior to departure. If the trip includes a ticket, then the cost of the ticket(s) must be paid at the time of booking.

Pick-Up Times

Passengers will be advised of times for a day trip by telephone approximately three days prior to departure.

Entrance Fees

Unless stated otherwise, entrance fees etc. are not included in the prices quoted.

Theatre Ticket Allocation

We have no direct control over theatre ticket allocation. Theatre seating cannot be pre-selected or guaranteed. Therefore on occasions ticket allocation may require parties to be split in the theatre.

Children (Aged 3 and under)

1 child aged 3 or under (per coach) can travel free but are not guaranteed a seat. This will apply on a first come first serve basis and age must be declared at time of booking. All other bookings for children aged 3 and under will be charged at the child rate and a seat is guaranteed.

Children (Aged 4-15)

Child fares apply for children aged four and over, but under 16, though this may vary in accordance with entry charges.

Group Bookings

If you want to organise a group of 10 to 49 passengers you benefit from our special conditions. Group bookings of 10+ will be eligible for a free place (coach travel only/ does not include any extra costs) provided the booking is paid in full by the organiser. All groups must have one group-leader who is responsible for the entire party.

“Please thank your driver for his careful driving through dreadful weather. He was helpful and friendly while maintaining professionalism. We would not hesitate in using your company again”

V Leighton

Cancellations and Changes

If you have to cancel your reservation on a day trip we reserve the right to make a cancellation charge to cover our losses, although we always try to avoid doing so. If there is an entrance/ ticket fee involved we may retain these cost if we have already purchased them or the booking is confirmed with the venue. If on any trip we can re-sell the seat we will be happy to make a refund (less £2 admin charge).

| Notice (working days prior to departure) | Charge |
|---|---|
| Prior to 14 Within 3-14 | Full refund (excluding tickets or costs) Full refund in form of a credit note (excluding tickets or costs less £2 admin charge) |
| Within 48 hrs | 100% of trip price |

Coaches

We do endeavor to use a full size coach on all our day trips, however we do reserve the right to use a 29 seater mini-coach - when booking numbers are low - to avoid cancelling a trip.

Holiday Booking

Complete the booking form included in this brochure and send it with your deposit to the address on the form (please make cheques payable to “Tanat Valley Coaches”); or visit our office or any of our agents (details on the back cover). A booking can be confirmed only on receipt of a minimum deposit of £40 per person. Full payment for a tour must be made at least six weeks prior to departure, or earlier if specified. Please call us if you have any questions.

Excursions and Entrance Fees

We reserve the right to cancel any optional excursions due to low numbers. With regard to regulations governing driving hours it may be necessary to alter the order of the excursions. Optional excursion prices are subject to alteration if costs are changed. Excursions as outlined in the itineraries are included in the price of the tour. Unless stated otherwise, entrance fees etc. are not included in the prices quoted.

Single Occupancy

Please note that most hotels and ferry companies levy a supplement for single occupancy which we have to pass on to the customer.

Luggage

Your attention is drawn to the limited luggage space and we suggest one large suitcase between two people, or two small suitcases. Our driver and porters have to lift luggage by hand. Therefore a maximum weight of 18 Kg per case will be allowed. You must attach issued luggage labels to all items. It is the customer's responsibility to ensure that luggage is loaded onto all coaches. All baggage and personal items are carried at the owners' risk. Never leave luggage unattended. The return of any luggage left behind on the coach will be charged at cost.

Cancellations and Changes

Tour arrangements are made many months in advance. Sometimes changes are unavoidable and we reserve the right to cancel, or alter any holiday tour without notice, but undertake to give you, the customer, a minimum of 21 days notice in the event of cancellation, and a full refund. If we have to make any significant change to your holiday we will inform you of the change.

Should you, the customer, wish to cancel your booking we must receive notification in writing and the charges listed here will apply, effective from the date we receive notice.

| Notice (working days prior to departure) | Charge |
|---|---|
| Prior to 42 days | Deposit only |
| 28-42 days | 30% of tour price (or deposit if greater) |
| 14-27 days | 45% of tour price |
| 7-13 days | 60% of tour price |
| Departure - 6 days | 100% of tour price |

If the reason for cancellation is covered by your travel insurance you may be entitled to reclaim these charges. If your holiday is cancelled by us and you have taken out insurance, you must apply to the underwriter for a refund of travel insurance premium, although an administration fee may be deducted from the amount paid.

Tanat Valley Coaches reserves the right to cancel, or alter any excursion without notice, and is not liable for any loss or inconvenience

General Booking Conditions

Return Journeys

We will usually give you an estimated return time but they can vary owing to weather, traffic, etc. If you are arranging for someone to meet you we suggest you ask the driver at the last break stop and telephone ahead.

Seat Requests

Whereas we will make every effort to reserve any particular seat on the coach, we offer no guarantee that the passenger has the seat in question on the day of departure. We use a standard seating plan for all bookings, but coaches vary in design and we therefore

arising therefrom, although passengers will receive a full refund.

Please refer also to the General Booking Conditions

Enquiries & Information

Telephone or visit us: Llanrhaeadr YM
01691 780908

Or call into any of our agents (see back cover for contact details)

reserve the right to alter the seats requested if necessary. Allocations are made on a first come, first served basis so you are recommended to book early.

Disabilities

If you have any type of disability you would like us to take into consideration, then please make us aware of it at the time of booking so that we can consider and discuss any reasonable adjustments to accommodate you. We must take seating requests on a first come first served basis but we will always try to give priority to disabled customers where possible.



Passenger Behaviour

We politely remind you, the customer, that you are responsible for your behaviour. The coach driver or ship's captain (where applicable) has the right to refuse boarding if you are unacceptably under the influence of alcohol or drugs, are violent, abusive or disruptive, or are behaving in a way which could cause injury to others, damage to property, or affect others' enjoyment of the trip. Refusal of boarding on the outward journey will be regarded as a cancellation on your part, resulting in cancellation charges if applicable. Should refusal occur during the tour or on the return journey we reserve the right to terminate your contract with us, and will have no further obligations or liability to you.

Consumption of Alcohol and Smoking

Tanat Valley Coaches' conditions of carriage require that no person may be permitted to drink alcoholic beverages at any time aboard the coach unless served by a member of staff. Failure to comply with this may result in the customer's holiday being terminated under the same conditions stated in the section "Passenger Behaviour". Alcohol illness within the vehicle will result in a minimum charge of £30 payable to the driver on the day.

Please note that in accordance with the law we operate a strict no smoking policy on all our vehicles.

*"Thank you very much indeed.
The bus was immaculate and very
luxurious and the bus driver was super"*

Lloyd Surveyors

Complaints

If you have a problem during your trip please tell the driver at the time giving him/her the opportunity to rectify the situation if possible. If you are not satisfied with the outcome, then please contact the office at the earliest opportunity.

Data Protection Act

In order to process your booking and travel arrangements we need to have your contact details. We keep this information on our Tour Database. We undertake never to pass this information on to any person or organisation other than those directly responsible for part of your travel arrangements.

You are entitled to a copy of the information held by us and if you would like to see this, please contact us.

Brochure

The information contained within our brochure was accurate at the time of going to press. However, we would point out that our Company cannot be held responsible for changes made by other agents, which may affect the tour itinerary. At certain times of the year, some advertised facilities, attractions and services may not be available.

Whilst every effort is made to ensure the accuracy in the compilation of this brochure, errors and omissions may occur. Before making a reservation please confirm details with our office. Please also view full itinerary of each tour before making a reservation.

Tanat Valley Coaches reserves the right to alter any itineraries listed within the brochure where deemed necessary and without notice.

TANAT VALLEY MOTORS: 01686 670988

- Class 4, 5 & 7 MOTs
- MOTs carried out on motor homes up to 12 feet high
- Inspections
- Servicing
- Repairs - all makes
- Pre-MOT checks on heavy goods vehicles & coaches
- Tracking & Wheel balancing
- Tyres & Repairs
- Friendly, experienced staff
- Retail • Commercial • Trade



Nook Lane Garage, Nook Lane, Kerry, Newtown

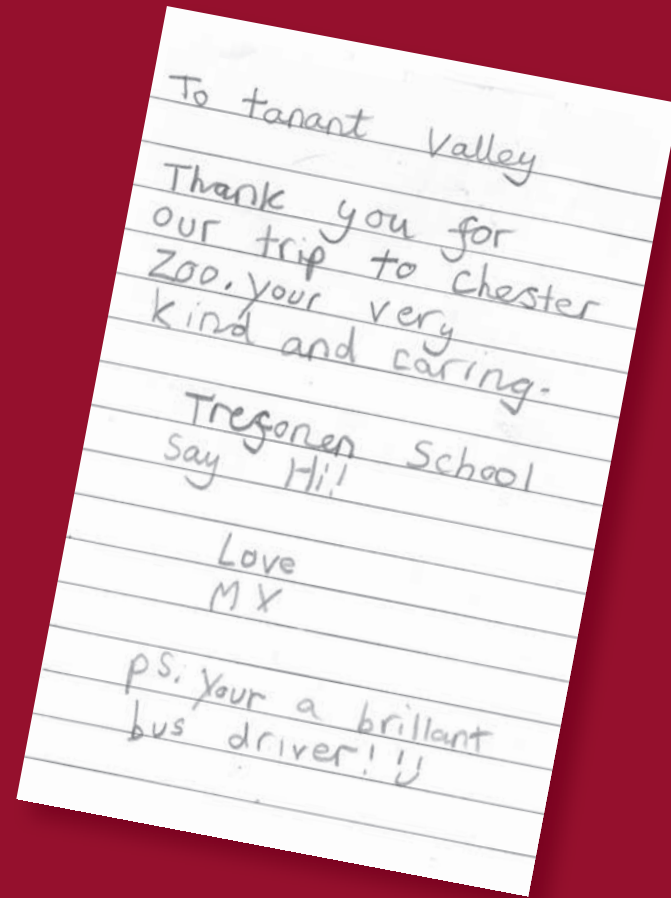
GIFT VOUCHERS Available in: £5/£10/£20

Stuck for ideas on what to buy your relatives, friends or colleagues? Our popular vouchers are redeemable against any product or service offered by Tanat Valley Coaches & Motors – so they can choose exactly what they want – the perfect present for any occasion. All vouchers are supplied in an attractive presentation wallet & envelope.

Purchase the perfect gift from our offices in Llanrhaeadr Ym Mochnant



(c) PBradley





CONTACT DETAILS

TANAT VALLEY COACHES

The Garage
Llanrhaeadr Ym Mochnant
Oswestry
Shropshire
SY10 0AD
Tel: 01691 780212
Fax: 01691 780634

info@tanat.co.uk

Follow us on:

 /TanatValleyCoachesOfficial

 /tanatvalley

OSWESTRY AGENTS

Oswestry Borderland Tourism Limited
Oswestry Visitor & Exhibition Centre
2 Church Terrace
Oswestry, SY11 2TE
Tel: 01691 662753

The Corner Café
75a Beatrice Street
Oswestry, SY11 1HL

WELSHPOOL AGENT

Welshpool TIC
1 Vicarage Gardens
Church Street
Welshpool, SY21 7DD
Tel: 01938 552043



Loyalty Card

Don't forget if you take day trips with us, you can benefit from money off your day trips in the future!

Ask your driver for a Loyalty Card and ask him to stamp it when you travel. Or call us on 01691 780908 and we'll post one out to you.